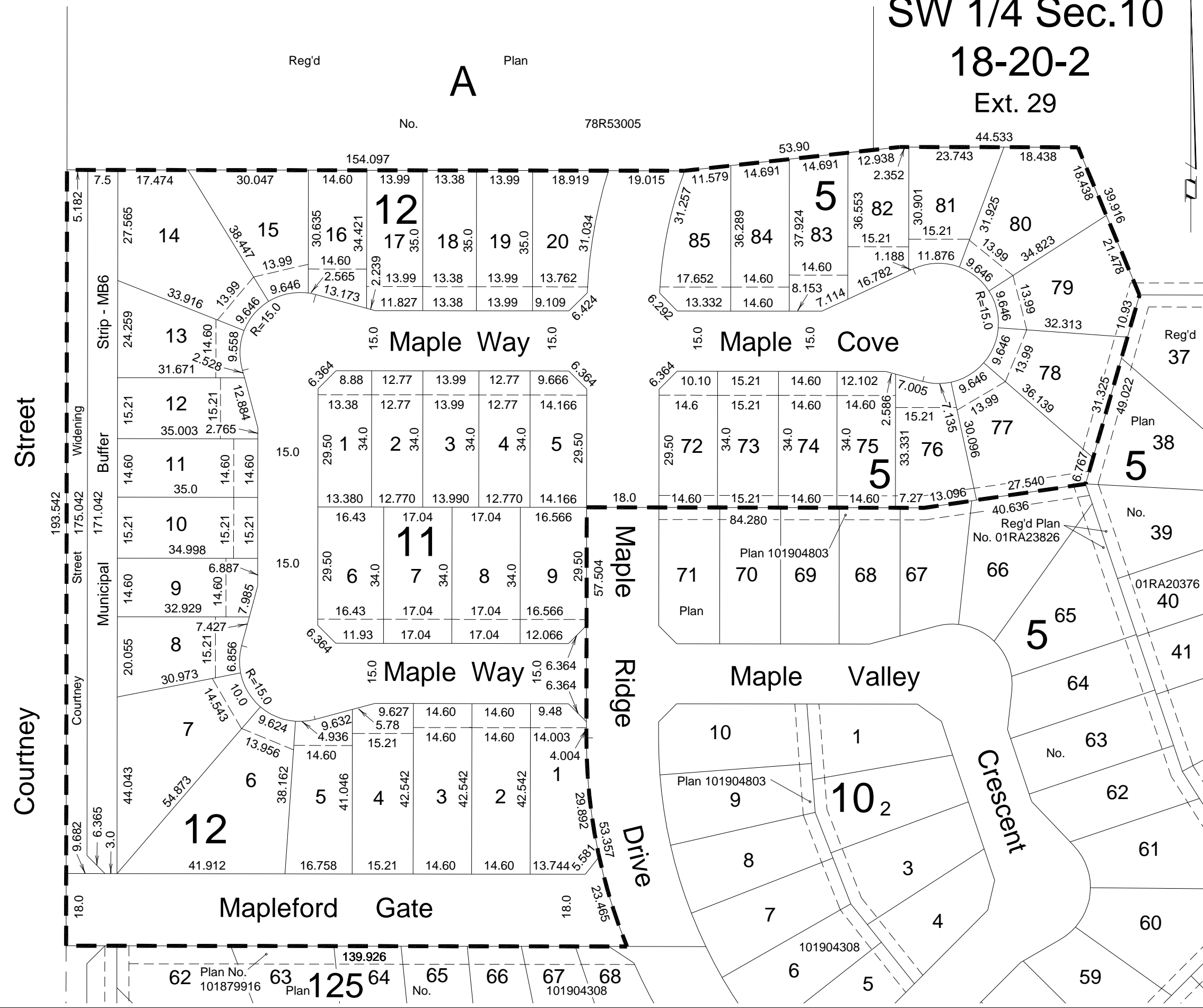


SW 1/4 Sec.10
18-20-2
Ext. 29

Maple Ridge Phase 5
Plan showing
Proposed Subdivision
of Part of Parcel A
Reg'd Plan No. 78R53005
And Part Of
S.W.1/4 Sec.10-18-20-2
Regina, Sk.
2007
Scale 1:1000

Reg'd Plan
A
No. 78R53005



NOTES
Measurements are in metres and decimals thereof.
Portion to be approved is outlined in a bold dashed line and contains approximately 3.66 hectares.
Dimensions are approximate and are subject to minor changes at time of legal survey.

Dated at Regina in the Province of Saskatchewan this 14th day of March, 2007.

Guy Craig
Saskatchewan Land Surveyor



OWNER : MAPLE RIDGE DEVELOPMENTS INC.

APPROVAL : The City of Regina
Approval under the provisions of Bylaw No. 7448 of the City of Regina this ___ day of ____, 2007.

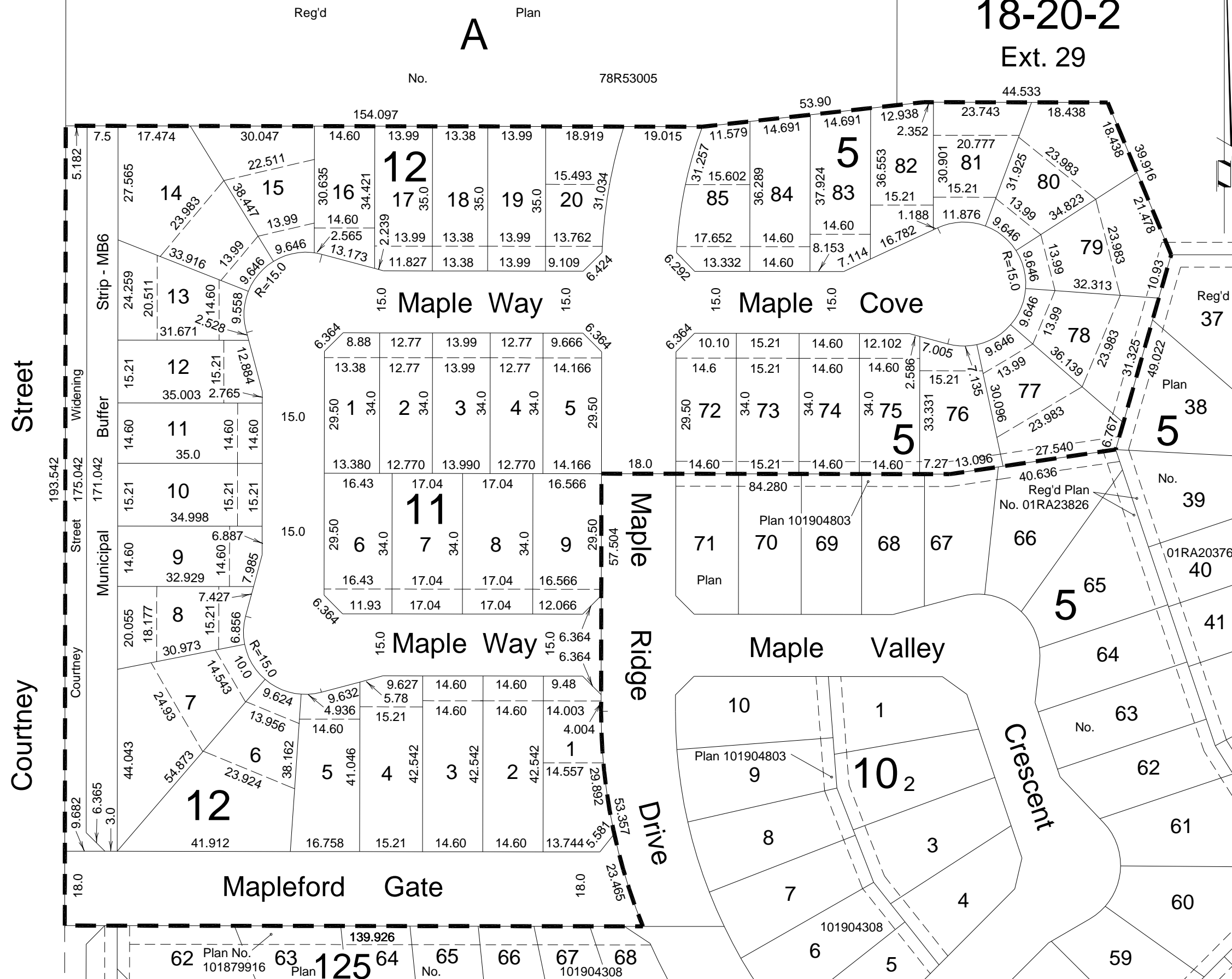
City Clerk

FOCUS REGISTERED LAND SURVEYORS
FOCUS CORPORATION
DWG. NO. I6I852-00-TLP-0-PROPOSED

SW 1/4 Sec.10
18-20-2
Ext. 29

Maple Ridge Phase 5

Sketch Plan
Showing
LOT SET-BACKS
of Part of Parcel A
Reg'd Plan No. 78R53005
And Part Of
S.W.1/4 Sec.10-18-20-2
Regina, Sk.
2007
Scale 1:1000



NOTES
Measurements are in metres and decimals thereof.
Plan shows approximate lot width at 6 m and 21 m set-backs.
Set-back width may vary depending on orientation on lot.
Dimensions are approximate and are subject to minor changes at time of legal survey.